

**CLERK'S RECORDING CERTIFICATE**

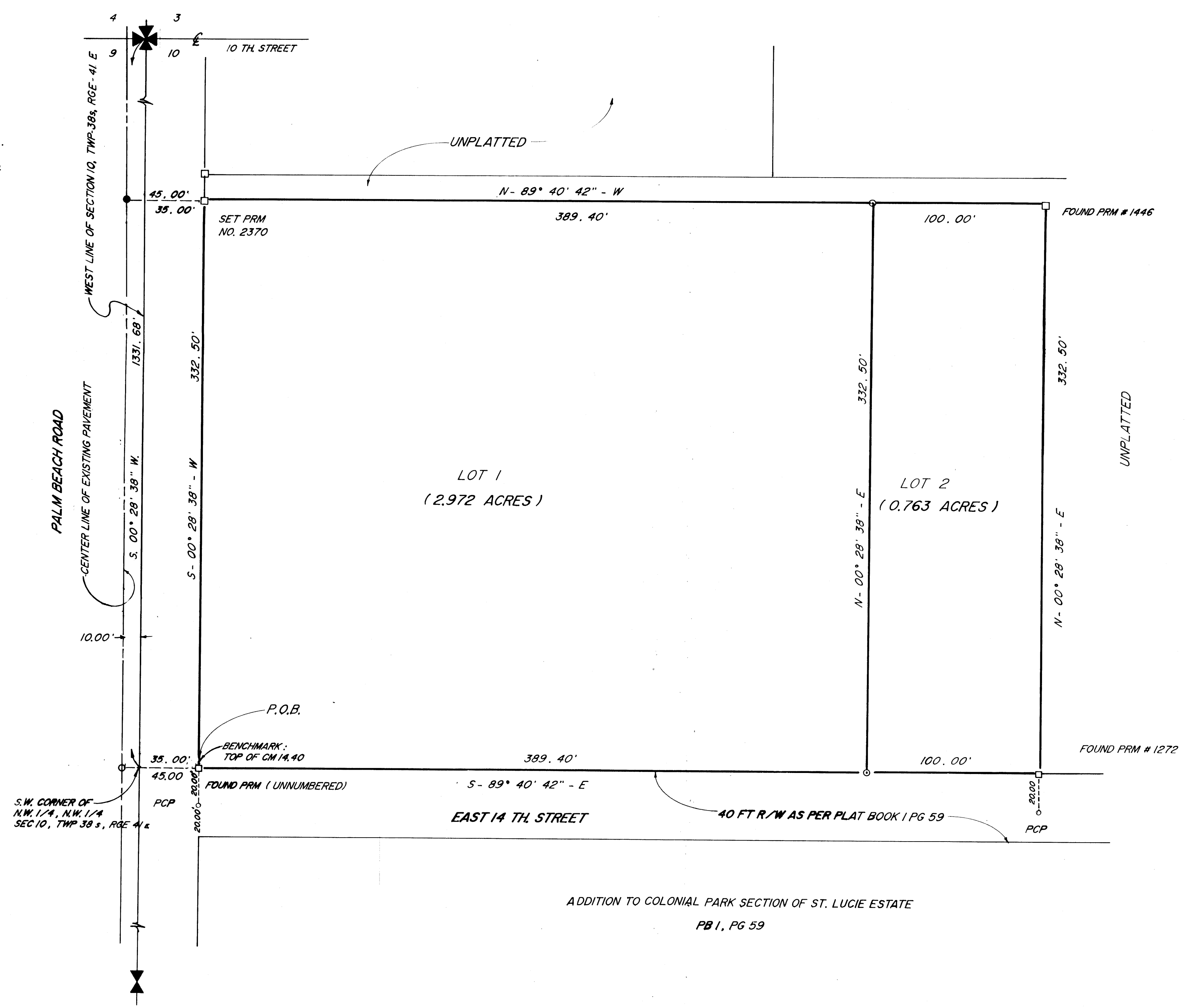
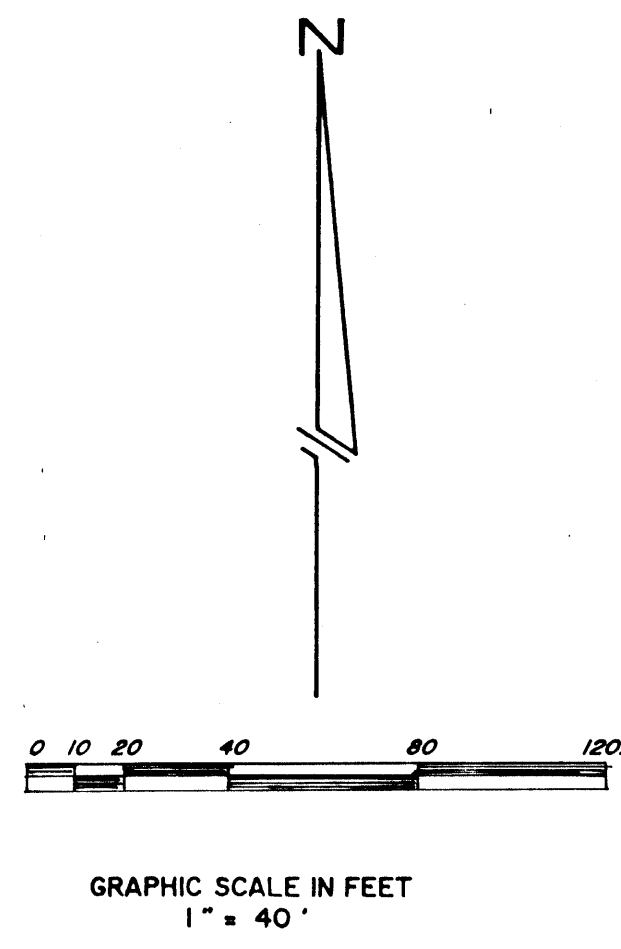
I, MARSHA STILLER, CLERK OF THE CIRCUIT COURT OF MARTIN COUNTY, FLORIDA, HEREBY CERTIFY THAT THIS PLAT WAS FILED FOR RECORD IN PLAT BOOK PAGE 12, pg 65 MARTIN COUNTY, FLORIDA, PUBLIC RECORDS, THIS DAY OF 1990.

MARSHA STILLER, CLERK  
CIRCUIT COURT  
MARTIN COUNTY, FLORIDA

FILE NO. \_\_\_\_\_ BY: \_\_\_\_\_  
DEPUTY CLERK

# MILLER'S SUBDIVISION

A PARCEL OF LAND IN SECTION 10,  
TOWNSHIP 38 S, RANGE 41 EAST, CITY OF  
STUART, MARTIN COUNTY, FLORIDA



**LEGEND:**

- = CONCRETE MONUMENT
- = IRON ROD
- PCP = PERMANENT CONTROL POINT
- PRM = PERMANENT REFERENCE MARKER
- ⊕ = CORNER SECTION
- ⊗ = QUARTER SECTION

NOTE: BEARINGS SHOWN HEREON ARE BASED ON THE WEST LINE OF SECTION 10 AS S. 00° 28' 38\"/>

ADDITION TO COLONIAL PARK SECTION OF ST. LUCIE ESTATE  
PB 1, PG 59

WILLIAM L. CREECH  
PROFESSIONAL LAND SURVEYOR  
STUART, FLORIDA